

# SMT POWER INDUCTORS

## Unshielded Drum Core - P0751/2 Series



- Height: 5.5mm Max**
- Footprint: 13.0mm x 9.4mm Max**
- Current Rating: up to 6.8A**
- Inductance Range: 1.0μH to 1000μH**

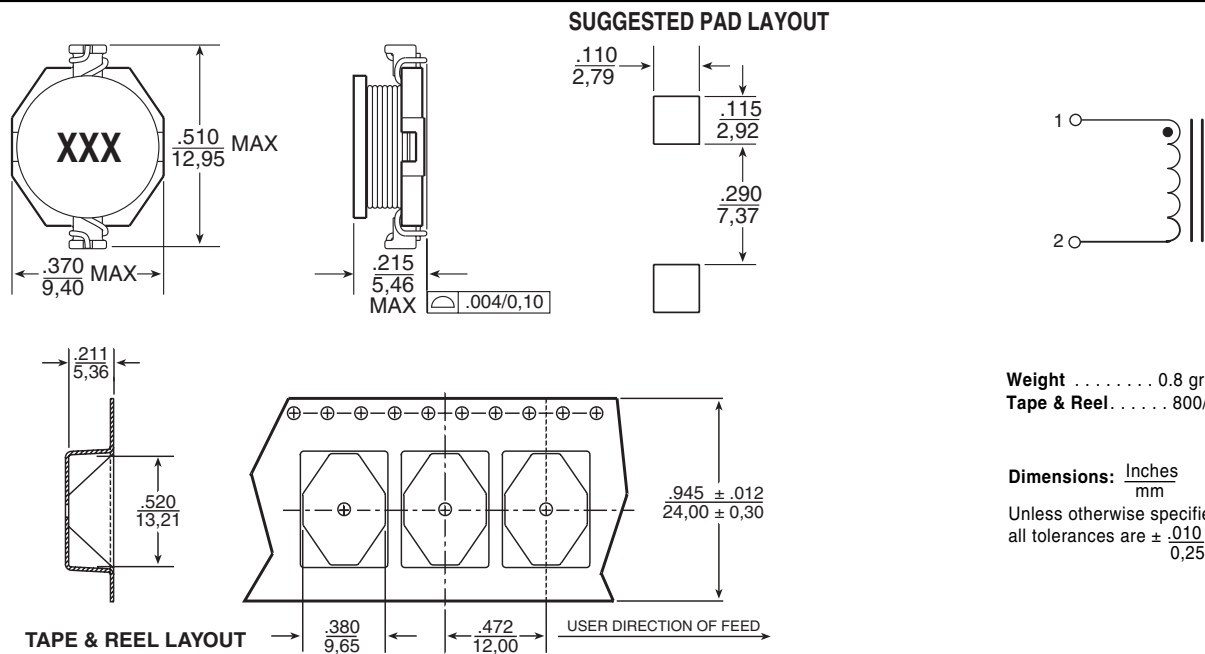
### Electrical Specifications @ 25°C — Operating Temperature -40°C to +130°C

| Part <sup>6,7</sup><br>Number | Inductance<br>@ I <sub>PK DC</sub><br>(μH ± 20%) | I <sub>rated</sub> <sup>5</sup><br>(A) | DCR (MAX)<br>(mΩ) | Saturation Current<br>(A) @ 25°C | Heating Current<br>(A) |
|-------------------------------|--|--|-------------------|----------------------------------|------------------------|
| P0751.102                     | 1.0  | 6.8                                    | 10                | 9.0                              | 6.8                    |
| P0751.152                     | 1.5  | 6.4                                    | 12                | 8.0                              | 6.4                    |
| P0751.222                     | 2.2  | 6.1                                    | 15                | 7.0                              | 6.1                    |
| P0751.332                     | 3.3  | 5.4                                    | 18                | 6.4                              | 5.4                    |
| P0751.472                     | 4.7  | 4.8                                    | 33                | 5.4                              | 4.8                    |
| P0751.682                     | 6.8  | 4.4                                    | 44                | 4.6                              | 4.4                    |
| P0751.103                     | 10   | 3.8                                    | 50                | 3.8                              | 3.9                    |
| P0751.153                     | 15   | 3.0                                    | 55                | 3.0                              | 3.1                    |
| P0751.223                     | 22   | 2.6                                    | 114               | 2.6                              | 2.7                    |
| P0751.333                     | 33   | 2.0                                    | 120               | 2.0                              | 2.1                    |
| P0751.473                     | 47   | 1.6                                    | 168               | 1.6                              | 1.8                    |
| P0751.683                     | 68   | 1.4                                    | 240               | 1.4                              | 1.5                    |
| P0752.104                     | 100  | 1.2                                    | 380               | 1.2                              | 1.3                    |
| P0752.154                     | 150  | 1.0                                    | 570               | 1.0                              | 1.0                    |
| P0752.224                     | 220  | 0.8                                    | 840               | 0.8                              | 0.8                    |
| P0752.334                     | 330  | 0.6                                    | 1020              | 0.6                              | 0.6                    |
| P0752.474                     | 470  | 0.5                                    | 1460              | 0.5                              | 0.5                    |
| P0752.684                     | 680  | 0.4                                    | 2170              | 0.4                              | 0.4                    |
| P0752.105                     | 1000   | 0.3                                    | 3300              | 0.3                              | 0.3                    |

- NOTES:**
- The temperature of the component (ambient plus temperature rise) must be within the specified operating temperature range.
  - Inductance tested at 100kHz, 10mV<sub>RMS</sub>
  - Inductance drop = 10% typical at the saturation current
  - ΔT = 15°C rise typical at the heating current
  - The rated current is the lower of the saturation or heating current
  - Optional Tape & Reel packaging can be ordered by adding a "T" suffix to the part number (i.e. P0751.102 becomes P0751.102T). Pulse complies to industry standard tape and reel specification EIA481.
  - To order RoHS compliant part, add the suffix "NL" to the part number (i.e. P0751.102 becomes P0751.102NL and P0751.102T becomes P0751.102NLT).

### Mechanical

### Schematic



**Weight** . . . . . 0.8 grams  
**Tape & Reel** . . . . . 800/reel

**Dimensions:** Inches  
 mm  
 Unless otherwise specified,  
 all tolerances are ± .010  
 0,25